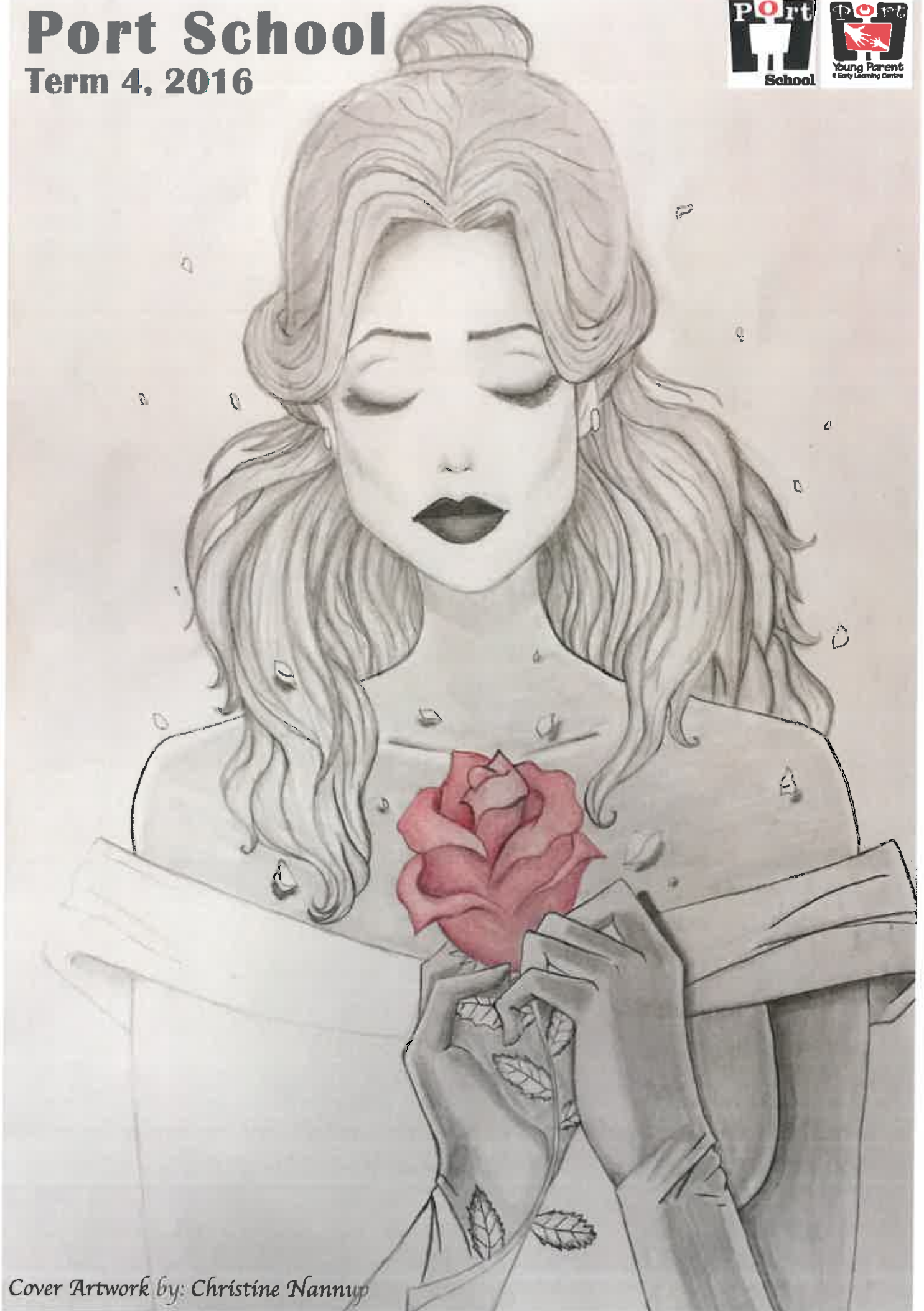


Port School

Term 4, 2016



Cover Artwork by: Christine Nannup

PRINCIPAL'S REPORT

I am proud to advise that 6 of Port's senior students are currently in school-based traineeships; one is in a school-based apprenticeship and a further 3 ready to start next year.

Port has always laid great importance on preparing students for employment and helping them transition into the workplace. We are now in the position to place our senior students into paid traineeships as part of their studies. Our aim is to get all students to a place where they are both willing and able to enter a school-based traineeship.

This opens up fantastic opportunities but in order to achieve this goal, we need the support of all parents and carers, and we ask that you all put in a concerted effort to get your children to school, on time and every day.

If a student gets to school late on a regular basis they will not make any major progress with their course work, nor will they have the kind of work ethic, which is needed in the workplace.

This is a ground-breaking project for Port, which can and will make a huge difference to the future of our young people. Making your kids come to school could be the best gift you can give them, helping them to secure a bright and independent future.

We are looking forward to an exciting and successful 2017 and beyond.

Barry

The first day back at school next term will be Wednesday 1st February 2017

Notable Dates for 2017

Australia Day	- Thursday 26 th January
Term 1	- Wednesday 1 st Feb – Friday 7 th April
Term 1 Break	- Sat 8 th April – Sunday 23 rd April
Labour Day	- Monday 6 th March
Good Friday	- Friday 14 th April
Easter Monday	- Monday 17 th April
Anzac Day	- Tuesday 25 th April
WA Day	- Monday 5 th June
Queens B'day	- Monday 25 th September

DEPUTY PRINCIPAL'S

Where did that year go? 2016 seems to have whistled by at a fast rate of knots. Our students have excelled this year with many taking advantage of our new RTO (Registered Training Organisation) offerings that can lead to traineeships and apprenticeships in many trade or business areas. Our community links remain strong with several Port students engaging in the now annual Rotary Youth Program of Enrichment & Leeuwin sailing Adventure. Both programs encourage leadership, team building, personal development and aim to promote meaningful citizenship and community engagement.

I was delighted earlier in the year when the school and wider Port community were recognised with a Global Apex Award for the Malaysia project that the school has ran annually since 2012. During that time we have raised over \$100,000 through donations, fundraising, grants and student contributions with over \$50,000 going directly to supporting Klang Special School in Malaysia, their trip over to Perth in 2015 and the local village hampers, gifts and toys we have sponsored over that time also. For a small school this is an incredible effort and to be acknowledged at a global level is extremely prestigious for all involved. The recent art exhibition was another first for Port and what a great event supported by students, staff and local artists. Over \$3,000 was raised for Malaysia and as you will see later in the newsletter, the standard of the work was very high.

On the staff front, Chloe Cook has been a fabulous find, leaving behind her role at Clontarf Aboriginal College to join the Port team as our new teacher in the Young Parent Centre. Chloe is already stamping her own educational mark on the centre working closely with Michelle to offer an amazing program. Rachael Hall joins our admin team as a part time trainee Business Administrator, you will see her on front reception or hear her friendly voice on the end of a phone. Welcome aboard to both Chloe and Rachael.

Sadly on the other end of the spectrum, the end of this year will see several staff changes. This always creates a level of unrest for our students, as they often don't like change. However as sad as it is to lose great staff, it certainly creates new opportunities, enabling new styles and a different dynamic. We will embrace those changes and make them work, building on a very solid foundation and team. We wish Megan Fitzgerald, Matt Jackson, Di Rowden, Myles Durham & Andrea Barr all the best for their futures as they move on.

With the festive season approaching rapidly, I think we all need to relax a bit, try to have some time with friends & family and recharge over the summer break. Thanks to all students, staff, families and our wider community supporters for making it yet another memorable year.

Mike

PORT BIKE RESCUE PROGRAM

This term, Port School has been fortunate enough to run a project with Dismantle's *Bike Rescue*. A group of interested students was given the opportunity to build a bike from scratch, under the skilled tutelage of *Bike Rescue* mentor-mechanics, Jeremy and Johnno. In actual fact, every student on the program got to build **TWO** bikes. The first bike was a donation bike to be gifted to a person in need. The second bike...the students got to keep!



Watching the students, dismantle, sand down, lubricate, polish, screw, unscrew, spray paint, buff, reconstruct and puff and pant at different stages of the project was both entertaining and rewarding! The program really helped Port students not only to build up their practical and mechanical skills, but helped them to develop important life skills such as patience, perseverance, collaboration, team work and positive communication.



For the most part, students were receptive to instruction and positively engaged... and for these students, it paid off as they got to ride off into the sunset on brand new bikes that they had reconditioned from a small mountain of parts! A big Thank you to Johnno and Jeremy for their patience, kindness and fairness, in guiding our boys through every step of the project, week by week!



FEDERAL LABOUR MP JOSH WILSON VISIT

Fremantle's Federal Labour MP Josh Wilson took time out to come and have a look around the school in the last week of October and meet up with Principal Barry Finch and Deputy Mike Gilbert. The easy going minister took over two hours out of his busy schedule to look around the school as well as the Young Parent & Early Learning Centre.



Josh was very impressed to hear how Port has diversified its offerings for its students and actually tackles social inclusion head on through the myriad of 'on and offsite' programs. Josh was very keen to meet Port students and look through the classrooms, workshops and facilities at the school.



Josh commented, "Port is an incredible school in my electorate that helps kids of all ages who struggle in mainstream education. It offers everything from childcare for teenage mums to linking students with trade apprenticeships. Most importantly, they provide a safe place for kids to learn and grow. I am in awe of the educators and carers who give so much to make this place a success"



Josh Wilson
Labor for Fremantle



PORT EARLY LEARNING CENTRE

We have had an amazing Term with our children and families exploring in the community. We attended The 'Teddy Bears Picnic' in Manning Park that included packing a picnic, collecting all our teddy bears, then jumping on the mini bus. The event was organised by the City of Cockburn with lots of free activities for families to explore.



TODDLERS VISIT TO NATURE PLAY PARK IN HAMILTON HILL



We took the toddlers to the local park to explore and develop our risk taking and physical skills. The park was challenging with a huge tyre slide and lots of logs to climb under and over.



ELC COOKERY CLUB

This term we have initiated a cookery club with the older children on a Thursday morning. Kathy our lovely cook will take some time out of her busy day to cook with the children.



We started off small and made some scones that were delicious. Next came pizza making followed by very yummy ginger bread men. This cooking project will carry on in 2017.



We have had an amazing year in the ELC with a few bumps along the way. Our children have been on an amazing learning journey and it has been a pleasure to have seen them grow into fantastic, curious, amazing and competent learners.

All the staff at the ELC would like to wish our families, children, school staff and board members a fantastic Christmas and a great new year. The ELC will reopen on Monday 16th January 2017.

**A VERY MERRY
CHRISTMAS
and Happy New Year !**

PORT ART EXHIBITION

Earlier this Semester teachers Dr. Matt Jackson and Ms. Joy Cromwell organised and hosted an art exhibition as a fundraiser for Malaysia 2016. With students, staff and donated local artists work, the exhibition raised over \$3,000 and was an amazing social event for Port's wider community.



Thanks must go out to local artists Camilla Loveridge, Anne Gee, Mathew Jackson, Sarana Haeta, Myles Durham and Sue Valente for donating pieces of art. Also a huge thanks to Grayem Durham from Red Letter Wines who sponsored the evenings drinks.





STUDENT SUPPORT

It is with a heavy heart that I must say farewell to Port School. Although I have thoroughly enjoyed my time at Port and meeting all of the wonderful students and their families, personal circumstances demand that I take some time to be with my family. To all those who took the chance to come and talk to me, to share with me their stories, to allow me a look into your lives, it has been an honour working for and with you all. It takes courage and a great sense of responsibility to go and talk to a complete stranger about those things that are most personal and private to us, in the hope that by doing so you will learn something about yourself and be able to deal with life's problems a little better. I have learned so much from all of you, and I know I am a better person for having been at Port. Thank you from the bottom of my heart, I will never forget my time at the school, and the wonderful people I have met. Take care of yourselves and each other, and the best of luck to everyone.

Myles



Student Support Services will continue to operate with staff and networks of schools during this transition and aim to:

- work in collaboration with services within the community to identify and intervene early with children and young people who have additional needs or are at risk
- develop the capacity of staff within schools to meet the needs of children and young people who have additional needs, or are disadvantaged or vulnerable, to enable them to achieve successful education & wellbeing outcomes
- target the delivery of individual support services to those who require specialised expertise, assessment and intervention in order to overcome barriers to learning
- respond to emerging student wellbeing needs and contribute to identified school and network priorities
- respond to critical incidents involving students, staff and school communities
- facilitate and strengthen partnerships between Student Support Services in schools and early childhood services, community organisations and community services, and health, family, child, mental health and youth services in order to provide greater options and coordinated service provision for children, young people and their families.

STUDENT SUPPORT CONTACTS

Student Services - Tel: 08 9335 6323

Email: admin@portschool.wa.edu.au

OUTREACH PROGRAM

At different stages of a student's life they can, for a variety of reasons, become disconnected from school, peers, their community or their family. Port School's Outreach Program aims to create a bridge that helps connect the student's back into life and back into the school environment.



Many young people these days can feel anxious, stressed or start to feel down about themselves. They may be having difficulties with friends, family or be having a hard time at school both academically and/or socially. We understand that for some young people there is a need to share a problem with someone and to gain some insight and advice as to what they can do in order to help themselves.



Our program aims to help improve social, emotional and physical wellness and if necessary can link the student in with the appropriate professional/agency to help see them through this time. Our team of staff work together in providing alternative and flexible options for the student.

The program offers one-on-one support both externally and at school, providing academic programs suitable to the individual. Our team of outreach workers are dedicated to the program and aim for success by valuing these principals:

- One on One support
- Community based activities
- Addressing social and emotional well being
- Nurturing ones strengths
- Encouraging resilience
- Setting individual and achievable goals
- Alternative timetables
- Reintegration

Megan & The Outreach Team

COOKING @ PORT

It's a highlight of the week to cook with the students at Port School. Although not without its challenges it's a delight to see the students work together, following recipes to serve an array of quite complex dishes each week.

The kitchen continues to evolve as teachers Tom, Phil and Matt look at ways we can blow the budget, not only with food products but importantly with tools, gadgets and devices for the students to use. This term we purchased a set of new Wustof Knives and boy are they sharp! Although primarily for the students to use there is a level of expertise that is expected before the students are able to command them on a daily basis. We look forward to seeing what kinds of creations the students are able to generate with these new tools.



PEANUT BUTTER & CHOCOLATE BROWNIES

Ingredients

Melted butter, to grease

150g dark chocolate, coarsely chopped

100g butter, chopped

215g (1 cup) caster sugar

75g (1/2 cup) plain flour

2 tablespoons cocoa powder

2 eggs

200g (3/4 cup) crunchy peanut butter

Method

Step 1

Preheat oven to 160°C. Brush a 16 x 26cm (base measurement) slab pan with melted butter to grease. Line base and 2 long sides with non-stick baking paper, allowing the sides to overhang.

Step 2

Place the chocolate and butter in a large heatproof bowl over a saucepan half-filled with simmering water (make sure the bowl doesn't touch the water). Use a metal spoon to stir until the chocolate melts and mixture is smooth.

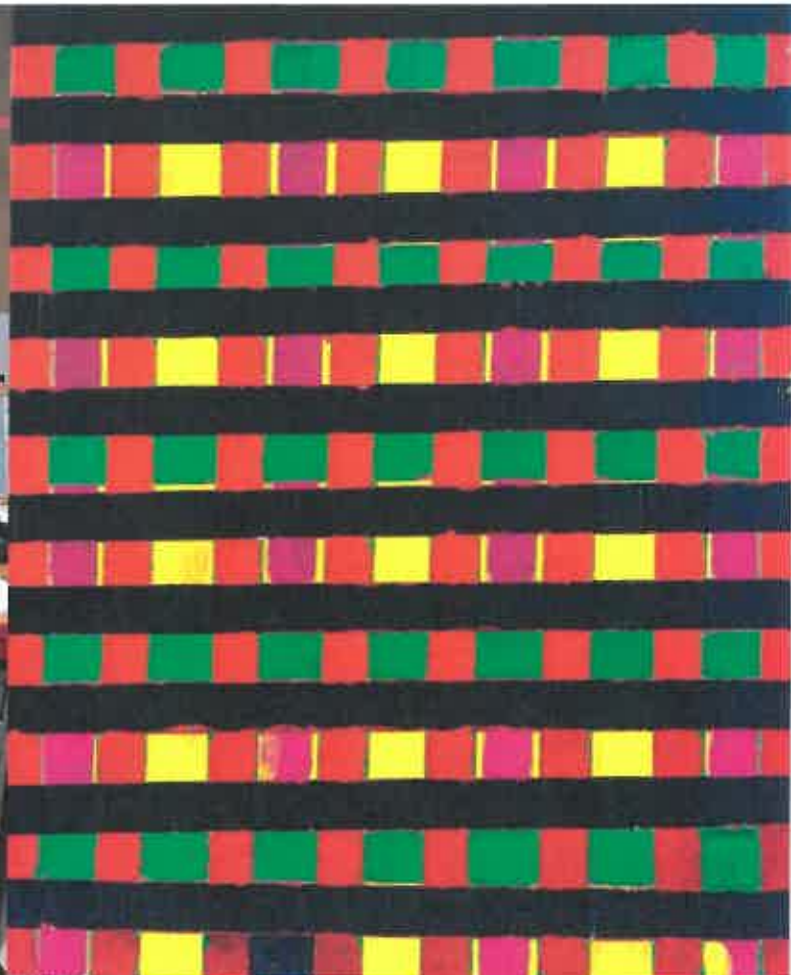
Step 3

Combine the sugar, flour and cocoa powder in a bowl. Add chocolate mixture and eggs and stir until just combined. Pour into prepared pan. Spoon peanut butter over brownie mixture and use a round-bladed knife to create swirls.

Step 4

Bake in oven for 35-40 minutes or until crumbs cling to a skewer inserted into the centre. Set aside to cool completely. Cut into slices to serve.







Doni



HEALTH AND WELLBEING REPORT

The Health and Wellbeing classroom has been the picture of industry and positive study habits this term and Port students have really demonstrated to me that they are capable of raising the academic culture of the school, with just a bit of dedication and enthusiasm...



Together, we have been doing a bit of inward reflection, and discussions and assignments have revolved around our identity - who we are, what we represent, what our core values are, what our life journey has been so far and where we might be heading into the future. Students have used song lyrics from their favourite songs to unpack and analyze aspects of their lifestyles and to identify their emotional survival kits. We also conducted a 'health audit' on an average week of our lives, and students were somewhat surprised to see the distribution of hours on various activities, with time spent on social media being the main culprit when it comes to robbing our young people of their leisure time.

We also studied the cult movie "The Breakfast Club" as a visual text to stimulate conversation about stereotyping and the labels that are fairly or unfairly attached to young people.

All in all, another terrific term with Port students going from strength in their attitude to learning, their classroom behavior and their genuine interest and enthusiasm to make educational progress. Have a safe holiday peeps and can't wait to return and do it all over again with you guys in the New Year!

Raf

ARTY FAREWELLS

Term four has been a positive and interesting time in the art room. I am very proud of my students who have accepted my challenge to give up tracing this term and instead focus on their drawing skills. This new direction has unearthed some real talent and many of the artworks produced this term have been of an excellently high standard.



It is with no small amount of trepidation that I will be leaving Port School at the end of this term to renew focus on my own arts practice. Teaching my Port School students this year has been an exciting, challenging and ultimately rewarding experience.

I would like to wish you all good fortune in all your future endeavours and thank you all for being such warm hearted and generous spirited people. Because of you, I will remember my time at Port with great fondness.

Best wishes,

Matt J

THANK YOU

Port would like to thank Janine and her staff from Transitions Health & Fitness for her support of Port School students. Janine offers her Gym facilities to the students on a weekly basis.



Unit 2 / 234 Berrigan Drive, Jandakot

 08 9414 1344

At Port we promote a healthy mind, healthy body ethos and the structured facilities offered at Transitions Health & Fitness have certainly enhanced our program and improved student fitness levels.

STAFF SPOTLIGHT

Rachael Hall

Business Administration Assistant



Hi my name is Rachael, I have recently joined the Port team and will be assisting with their administrative needs. This is my first role back in the workforce after spending the past 7 years raising my two beautiful children Leith (10) and Halle (7).

Prior to the break in my employment history I worked in various business administrative roles, including the local government road safety program to reduce road fatalities and the Activ Foundation assisting people with special needs which was very rewarding. I have a Certificate II in Business, and I am looking forward to commencing a Cert III business administration traineeship with Port School in 2017.

I am a country girl at heart having grown up in the Perth hills. In my personal life I like the simple things such as camping, boating & trying my luck at fishing with family and friends. I also enjoy running, beach walks & supporting my children teams with their sporting commitments.

I love travelling, and am looking forward to seeing more of the world now that my children are at a good age to travel. I am really excited to be back in the workforce and part of the Port team

Rachael

Ability

is what you're capable of doing.

Motivation

determines what you do.

Attitude

determines how well you do it.

- Lou Holtz

STAFF SPOTLIGHT

Chloe Cook

Young Parent Centre Teacher



Chloe began her career with young people as a carer for teenagers and young adults with disabilities with Nulsen Haven. She studied a Bachelor of Education at Curtin University completing a double major in English and History. She later completed a Post Graduate Certificate in Human Rights and is currently studying a Bachelor in Psychology.

After graduating from Curtin, Chloe began working at Clontarf Aboriginal College where she spent the next 6 years. At Clontarf, Chloe took on a variety of roles including co-ordinating the Literacy Buddies program with Notre Dame and the Numeracy Buddies program with Curtin University. These programs involved student teachers from the Universities working one-on-one with College students to help them to develop their reading and maths skills.

Another area of interest for her was developing STEM curriculum and pastoral care programs. This year she decided that her next move was to take on a role in Port School's Young Parent Centre helping young mums to complete their education and be the best parents to their babies.

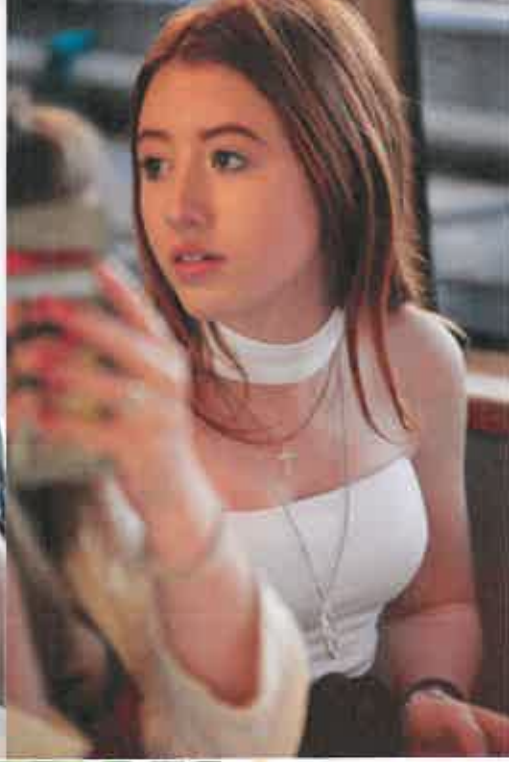
Chloe lives with her 6-year-old daughter Olivia and their two cats, which are actually more like dogs! Olivia will be starting Year One in 2017 and the little family will be moving to Fremantle to be closer to Port School. Chloe's excited to start this next chapter and continuing her story at Port and has already taken on additional areas such as introducing beauty therapy sessions to the Port students, something the school are keen to consider as a potential certificate course in the future

Chloe



RIVER CRUISE 2016







Bibbulmun Track, Kalamunda

December 2016

Megan and Andrea decided it was high time we took the girls on camp. We scaled the faces of rocks, climbed to the highest mountain peaks, swam the rocky rapids, wrestled wild animals, drank water from the rain gods, ate from the naked flames, slept on rock hard surfaces and carried packs weighing more than an elephant..... Ok ok! Not entirely true so Georgia and Jess will tell how the story really went.



On October 20th, 2016 there was a camp for a few of the girls ran by Andrea and Megan. As we all arrived at school we got our camping gear together and loaded up our packs, ready for our trip to Ball Creek Hut on the Bibbulmun track. Our bags were put in the bus and we excitedly left Port school! At Lesmurdie falls we made our first stop to go for a walk, which was so hard and exhausting and tiring. OMG! But at the end we were all proud we got through it and had an amazing view of the Mundy Regional Park in Forrestfield. After that we walked back to the bus and went and found a place to go and have lunch and chill for a bit before getting back on the bus to make our way to Ball Creek.

We parked in the Mundaring visitors centre and with our packs on our back (OMG they were so heavy) started our 3km walk to get to the hut. At only half way there we were all about to drop so we had a break. We were up and down up and down hill the whole way there whilst tripping over rocks and sticks! We could then see the hut after more walking and were so keen to sit down and unpack. Stormee made a joke about how funny it would be if someone fell over and then BAM Stormee but hit the ground and there were giggles all round.



Once at the hut with lots of "phews" we unpacked, put tents up and searched for fire wood. When the fire was cranking and just before dark we prepared our beef stew with some damper and whilst it cooked we chilled and got changed. Dinner was ready so we all sat around the table like one big happy family! It was a bit spicy but was really good and we all helped clean up. There was lots of laughter around the fire after dinner with funny games and everyone was having a good time. Then we started to get desert ready, which was Andrea's creation of roasted chocolate nut bananas. Delicious! After that we cleaned up we walked some more to find phone reception to say goodnight to our loved ones. After that it was time for our tents. The next morning we had milo and coffee around the fire with a huge breakfast of bacon and sloppy scrambled eggs! Mmmmm mmmmm! We packed our bags, which weighed much less as we had eaten all the food! And went to walk back to the van. The return trip seemed so much quicker! YAY WE MADE IT! Threw our packs in the van and grabbed an ice cream to celebrate! We then headed back to school and home to shower as we really did stink! AHHHHHHHH normal beds and toilets. Luxury. Thanks Andrea and Megan we had an amazing time!

THE WORKSHOP

&

CONSTRUCTION

This semester in the workshop has seen a couple of large projects, one completed and one just starting. The cubby house is finished, made to Australian Building Standards and sold onto a lucky client who has two small children that will wake up to their present on Christmas day.



We have also started a project in the form of a 1960's timber speedboat, we are refurbishing the hull which has incorporated replacing many parts of the hull. We also have a 6-cylinder motor to be installed in the boat and worked upon by the students. They are half way through refurbishing the trailer and we are looking forward to get the boat in the water in the latter half of next year. All the students working on the boat will be spending some time on the river putting the boat through some sea trials.



This year we have also had the usual array of introductory projects including electronics, leatherwork and woodworking, some students also doing more involved projects such as CD racks, mirrors and guitars etc.

Next year we will be commencing a Certificate II in Furniture which will entail a more detailed look at hand tools and machines and how we use them to do fine work, set up small production runs as well as their calibration and maintenance. All the students will complete a set piece that will include, amongst others, carcase, drawer and door making techniques.

There will also be some new introductory projects so all in all I look forward to a great new year in the workshop that encompasses all levels or skills and interests.

Phil Brooks



TeamSport

Ports annual Phillip Hughes Tribute match has just gone down to the wire at Kardinya's Alan Edwards cricket oval. The last two years tournaments have seen one match apiece to coaches Megan Fitzgerald and Mike Gilbert's teams. With Megan leaving Port at the end of this year, this was to be a match of all matches and despite being best of friends the challenge was on for this outing.

**Match Winners:**

Megan & Christine's Team

Player of Match:

Kyenn Thompson

Best Batsperson:

Luke Goncalves

Catch of Match:

Jay Polkinghorne

Thanks to Participants:

Mike's Team - Josh, Kyenn, Jay, Georgia, Seb C, Mathew, Jack,

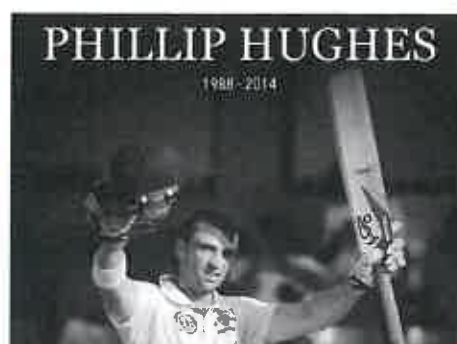
Megan's Team - Cameron, Seb L, Christine, Calum, Carley, Dylan, Jerome, Byron, Luke, Jarod, Connor,

Staff:

Brad - Umpire

Coaches - Mike & Megan

Megan Fitzy and her team took out the 2016 annual trophy in a nail biting final over. Luke & Josh had an amazing opening bat notching up 38 runs. Mike & his batting partner Georgia notched up a 42 run partnership with fours and sixes flying around the oval to start the team's comeback. In the final over Jay P & Jarrod team needed three runs off the last four balls, sadly some excellent bowling by Megs boys and girls put an end to Mike's teams hopes. Megan and her team walked away winners after an amazing day and a fabulous tribute to an amazing young sportsman, lost too young. An emotional Mike was unavailable to comment to channel nines news reporters. Well done to all on a great day's sport.



SPORT @ PORT

"EXCELLENCE IS NOT A SKILL IT IS AN ATTITUDE"

This term in PE we have continued to challenge students with Fundamental Movement Skill exercises that have included weight based challenges and a focus on object control activities, as well as continuing our HITT training. Research shows this training will improve your health, promotes human growth hormone production, and improves strength and stamina.



We have devoted time in PE to work on our cricket skills including batting, fielding, bowling and some challenging catching activities. The Team Sports program exposes students to important lessons in personal values where they learn teamwork, leadership skills, and appreciation of different abilities, respect for team-mates, opponents and officials as well as the opportunity to build resilience through sharing positive and negative experiences.

Activities this term have included Ultimate Frisbee, Frisbee Football, Flag Rugby, and our version of Gaelic Football. As you will have read from the previous page, we also played our third memorial Cricket match in memory of Philip Hughes who passed on after being struck in the neck by a cricket ball on 27th November 2014. The last two matches were played with the teams being coached by our team sport staff, Megan Fitzgerald and Michael Gilbert both coaches have led their teams to a victory and were confident that their team would take this decider. This year's match was held at Alan Edwards reserve, and was also the last time that Megan Fitzgerald would coach her team as she is sadly leaving our program to go back home to Melbourne, Victoria. Our students had a great day but the victorious team and coach (who I am sure will remind the other coach whenever they can) was Megan, Christine & their team.

We cannot always build the future for our children, but we can build our children for the future.



MOBILE CLASSROOM

Where has this year gone!! With what seems like a blink of an eye 2016 has flashed before our eyes. And what a year it has been. Our Bus program has gone from strength to strength over the course of the year. Tom, Matt and Tristan are excited and proud of where we have got to, and what lies ahead for the Mobile Classroom Program in 2017.



We have forged a really positive community amongst our students over the course of the year.



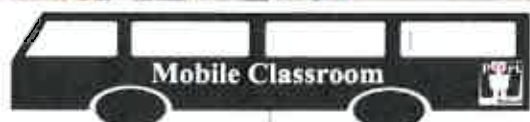
We are immensely proud of our boys. They have not only shown commitment to their education and themselves, they have overcome adversity time and time again, and risen to the challenges we throw at them.



Some of the highlights of the year are fire lighting with our Nyungar Elder Koodah, camping the Bibbulmun track, under 16s and under 18s basketball, stepping Tristan in grid iron, climbing Bluff Knoll, sailing across Albany Harbour, Reece getting his traineeship, and countless others...



Well-done fellas, looking forward to next year!!





ALBANY & BLUFF KNOLL CAMP

NOV 2016-11-28

In week 7 we took 9 boys down to the Great Southern region in November for four nights on camp. In that time we climber Bluff Knoll, the highest mountain in WA, and spent time sailing in Albany. We also explored the local sights and wildlife, caught fish, ate good food and generally excelled at life.

The camp was a huge success, and all the boys got something positive from the experience. Conor even left a token of his appreciation halfway up the mountain... Well done fellas, looking forward to more next year.

Tom, Matt & Tristan



MATHEMATICS

The last newsletter of the year and this will be the last one from me. I have enjoyed my time at Port as the Math teacher and will miss many of the students terribly! This semester we have continued with our learning of mental math and numeracy with many of the cert students forging ahead!

During the week we did a "cheeseburger weights challenge". We watched the documentary 'Super Size Me' and the students had completed some previous research on exactly what a McDonalds cheeseburger does contain. Here are their stories:

Cheeseburgers contain:

5 grams of sugar

0.5 grams of salt

14 grams of fat



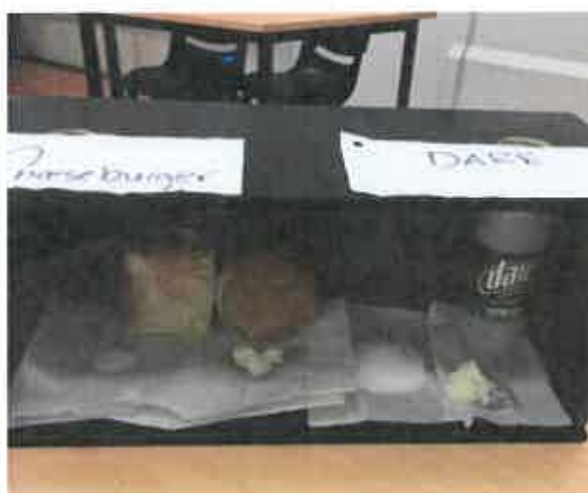
By Jo and Magnus

Cheesburgers are salty, sweet and have a lot of fat. We measured how much fat and sugar in the cheeseburger. Same with Dare Ice Coffee. They are full of mega loads of sugar. We consume the most amount of sugar in the world

By Dylan, Josh, Seb.

We measured how much fat, sugar and salt are in cheeseburgers and fries. We also did weight for the ice coffee. What we found out was quite staggering.

There is a sample of the Cheeseburger challenge and Dare Ice coffee on display in the kitchen for all students to see.



RTO RAMBLINGS

Port Schools Registered Training Organisation (RTO) has just completed its first semester with a full complement of staff, most importantly Steph who is managing our employer engagement process has made great inroads into getting around 12 students involved in a range of work experience and traineeship opportunities.

At Port school we are delivering certificate II's in Community Services, Hospitality, Construction, Sports Coaching, and a CALM Park Ranger qualification. In addition to this we have also worked hard at developing relationships with employers and other RTO's for our students who express an interest in occupations outside that which we deliver, this has included, to date, Retail and Boilermaking.



Next year we have made inroads to have on our scope further qualifications that will include Furniture Making & Beauty Therapy. Classes will be run in these areas and those students that progress well will be supported into work experience & if they impress the employer, into traineeships. We are now providing something very important, and where we once supported students up until the end of secondary school we are now providing some great vocation based training and real pathways into employment, oftentimes for kids who previously may have had few options other than welfare support. As the manager of the RTO I welcome contact from parents and guardians who may wish to know more about our programs or to better understand their child's qualification and progress.

Phil Brooks – RTO Manager

ENGLISH

The English classroom has been its usual hub of hustle and bustle this term, it seems the term has flown by! Each semester we begin with a new program, which is very much student centered. A variety of multi modal texts are used to guide each students' learning such as the use of image, music, spoken language, and written language also books, comics, posters and it has been a most productive period. Using multimodal texts facilitates the different learning styles and acknowledges that each student comes to us with specific needs, strengths and challenges. Further to this is the incorporation of the differentiated curriculum model whereby the individualized learning habits of each student is recognised and diverse, fair and flexible programs are delivered.

Quotes Love and Life.com

Knowledge is knowing a tomato is a fruit;
Wisdom is not putting it in a fruit salad.

I consider myself fortunate to teach in this environment at Port, as its small class sizes are the ideal setting for practicing the differentiated curriculum.

-Design lessons based on students' learning styles.

-Group students by shared interest, topic or ability for assignments.

-Assess students' learning using formative assessment.

-Manage the classroom to create a safe and supportive environment.

-Continually assess and adjust lesson content to meet students' needs.

Cathy Weselby in Teaching Strategies

There have been countless studies on the advantages of this method including but not limited to those outlined above. It has, as usual been a pleasure working with the students of Port and I look forward to doing this all again in 2017. Have a wonderful break and a very happy and safe holiday to one and all!

Joy



LEEWIN

Ocean Adventure Foundation

Port is delighted to have had one of its students: Jay Sammels recently undertake the Leeuwins 7 day excursion back in November 2016. The Leeuwin Ocean Adventure Foundation offers one of the last true ocean adventures - sailing on board Australia's largest tall ship Leeuwin II.



The Youth Explorer Voyages allow students aged 14 and up to develop the skills required to be an active member of a team and a micro-community. On board, participants experience the vastness of the natural environment, sail through the night, and have the opportunity to climb to the top of the tallest mast.



Providing students with responsible risk taking and a real-life hands-on adventure, the Youth Explorer Voyage encourages all participants to build individual self-esteem, social confidence and self-reliance. This rewarding voyage helps youth identify and set personal goals and develop valuable skills, which are transferable to their home, school, and work lives.

The Leeuwin Ocean Adventure Foundation is a not-for-profit organisation providing youth development programs. The vehicle by which these programs are delivered is through 'adventure' and 'controlled risk taking' aboard a traditional tall ship, Leeuwin II.



While aboard the Leeuwin II, students (trainees) are exposed to a number of real experiences, which stimulate change, growth and learning. The core elements of this experience are:

1. **Sailing a tall ship**
2. **Working in unfamiliar surroundings and with unfamiliar people**
3. **Role models**
4. **The interruption of habits and routines**
5. **Experiencing the wilderness of the West Australian coast**
6. **Being 'sea sick'**
7. **Isolation and simplicity.**



STAFF SPOTLIGHT

George Variyan
Port's New Mathematics Teacher



George Variyan returns to the team at Port School as the Mathematics teacher in 2017. George began his teaching career at Port and after finishing his five-year tenure with the school returned to act as Chairman of the Port School Board in 2009. He has since worked at several schools including a stint abroad in Indonesia as Mathematics Coordinator and Teacher at the Australian International School, and more recently in the Melbourne as a Mathematics Coordinator at Melbourne Grammar School.

During the last three years George has been completing his doctoral studies with Charles Stuart University after finishing a Masters in Educational Leadership in 2012. He is due to complete his studies in early 2017 and is keen to bring his wide range of skills and experience to support students' learning experiences at Port.

George is also looking forward to coming back to Perth to reconnect with friends and family and hopes to reside in the Fremantle area or the nearby surrounding suburbs. He also has a keen interest in music and looks forward to getting back into playing bass in the Freo music scene. George has a young family and is certainly also anticipating more time at the beach to build sandcastles and get the kids swimming more regularly.

w e l c o m e

STUDENT NEWS



VIDEO GAME CONSOLE MUSEUM

Thu 01 Dec 2016 - Tue 31 Jan 2017 10:30am - 5pm
Enjoy 10% off admission tickets to The Nostalgia Box this summer holiday! A day at The Nostalgia Box promises new experiences, a loving trip down memory lane, and a crash-course in the history of gaming

DARK UNIVERSE PLANETARIUM SHOW

Sat 24 Sep 2016 - Mon 30 Jan 2017 10:00am - 05:00pm

The Universe is a curious place - more so than we ever imagined. Dark Universe celebrates a new age of cosmic discovery as well as its deepest mysteries.

FLIGHT EXPERIENCE PERTH

355 Newcastle St, Northbridge WA 6003
Captain a replica Boeing 737-800 Flight Simulator under the guidance of your own personal instructor.

BIG WAVE SURF SCHOOL

Secret Harbour. Cost 2 day course \$99, 4 day Weetbix surf groms course \$189 (FREE Quicksilver pack - www.surfschool.com.au)

SCITECH SCHOOL HOLIDAY PROGRAMS

Scitech, City West, Perth. For more information contact the bookings team on 9215 0740 or email bookings@scitech.org.au or www.scitech.org.au

WHITEMAN PARK SCHOOL HOLIDAY ACTIVITIES

Bookings essential for all activities. Phone (08) 9209 6000 Mon- Fri 9am - 3pm to book.
www.whitemanpark.com.au

THE MAZE, HOME OF OUTBACK SPLASH

Bullsbrook. www.themaze.com.au

ADVENTURE WORLD

Bibra Lake, www.adventureworld.com.au

Student Comments

"I would like to thank Port for helping me get the Woodside Scholarship to go on the Leeuwin tallship. It helped me decide and open my eyes that there is more to life. It was a wonderful experience & life changing opportunity, killer" !!
Jay Sammels

Teacher: Where is your homework? **Me:** I lost it fighting this kid who said you weren't the best teacher in school.

"On behalf of us both, we would like to thank Port, Mike & Joy for the amazing experience allowing us to go and work with Klang Special School in Malaysia. The heat was not enjoyable, but the food, culture and everything we did was amazing"

Jay Polkinghorne & Christine

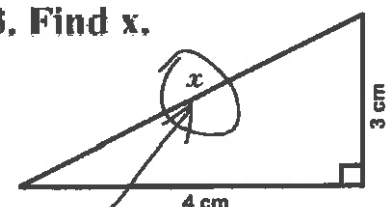
"Going to Malaysia was the best part of my year as well as Team Sports and all the different activities we do."

Caleb Willis

"This year I have taken on a student counsel role which includes organising students and teachers who speak at parliament. Next year I am also looking forward to doing a Cert II in Beauty Therapy and Hospitality"

Kristal Brebner

3. Find x.

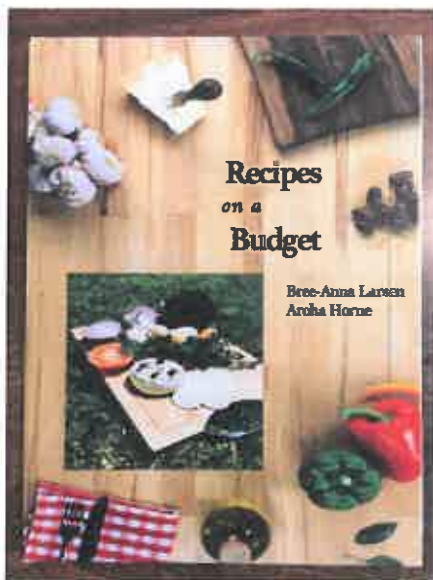


Here it is



YOUNG PARENT CENTRE

It is hard to believe that this term has already flown by, as we count the days down to Christmas. The Young Parent Centre (YPC) has seen many changes this term, especially with the employment of Chloe, the full time Teacher and Chelsea, our Education Assistant.



This term has been busy in the YPC, with several of the young mums completing their Certificate of General Education II and others rapidly completing their units of competency. Two of the students have finished a recipe book as part of their course. All recipes were trialed and taste tested prior to submitting the final version for publishing. Some of the recipes include: hamburgers, dip, numerous salads and various sweets such as cheesecake and chocolate cake. The book will be sold for \$35.00 with any orders taken through Michelle in the YPC – 0468 814 950.

We have welcomed a new addition to the YPC, Kalijah, who will join his little friends in the Early Learning Centre next year. We have also welcomed back a couple of students and a few new students who commenced this term.



There have been many wonderful volunteers and services involved in supporting the YPC this term. We would like to acknowledge Kristy Mippy from St John of God Murdoch for helping assist the young mums with social outreach and support services and Maria Quagga, Services Manager from Visy, for providing mentoring support to all the students. The Red Nose Association has again offered "in kind" training on safe sleeping habits for babies, infants and children. Through this collaboration, two students were invited to attend the re-branding of SIDS and Kids to Red Nose at a function at the Bell Tower in Perth. The girls were very proud ambassadors of Port School and had a great evening. The YPC will continue their liaison with Red Nose next year.



**red
nose**
saving little lives

From all of us at the Young Parent Centre, we would like to wish everyone a very Merry Christmas and a safe and Happy New Year and look forward to seeing you all next year. HAVE A WONDERFUL BREAK!!!



BEAUTY SCHOOL

This term we ran a short course in Beauty Therapy. The students learnt some basic skills like manicure and pedicure and also practiced some make up skills, especially Halloween style make up which was a lot of fun!



The bravest amongst us learnt some waxing skills as well. We learnt about the differences between hot wax and strip wax and had a lot of fun ripping the body hair out of our friends. We waxed everything from arms and legs to male facial waxes. I was very impressed by the student's enthusiasm and courage in stepping out of their comfort zones.



Next year we will be expanding the Beauty class and offering a Certificate II in Retail Cosmetics and Skincare. This will give students the qualifications that they need to begin a career in the beauty industry.

It has been a pleasure to watch the students grow in confidence and achieve some fantastic results in a very short time frame. I can't wait to see what 2016 brings!

Chloe Cook

PONY CLUB

We are pleased to announce that Port School will be offering an exciting opportunity for students to be a part of it's very first, Pop Up Pony Club.



PONY CLUB WESTERN AUSTRALIA

Starting in term 1 next year, the 10-week program will be run each week at Zia Park Equestrian Centre, Gidgegannup.



The Pony Club will give the lucky participants the opportunity to learn to ride, handle and care for a horse. At the completion of the course participants will receive a nationally recognised, D Star Certificate. This is a very special opportunity and places are filling up fast! All enquiries please see Chloe Cook in the Young Parents Centre.



Department of Sport and Recreation

The State government through the Department of Sport and Recreation is a major supporter of Port School's Pony Club in Western Australia. Sport and recreation builds stronger, healthier, happier and safer communities.

New Employer Community

Port now has 15 local businesses in our Employer Community. As we near the end of 2016, we want to extend our sincere thanks to them all for the opportunities they offer our students. We look forward to a prosperous 2017. Port and its students extend a warm welcome to the newest members.

Port is fortunate to have these local businesses supporting our young people. They will be offering Work Experience and School Based Traineeship opportunities.



After more than 30 years working in the industry, the Letizia brothers established Port Kembla Tiles in 2008 at Bibra Lake. The business was created to provide Perth homeowners and tradesmen with a 'one-stop' tile outlet that would make shopping for tiles convenient and easy.



John Letizia at Port Kembla Tiles, Bibra Lake

Rob is another new employer who is building a small plane. He is offering a very exciting opportunity in 2017 to one of our students who is keen to get into that area of work experience.



Rob 'the plane', Bibra Lake

Ormsby GUITARS

Port is delighted to welcome aboard Ormsby Guitars from O'Connor. Owner Perry was featured on the TV program Shark Tank earlier in the year and again is another exciting addition with our musical and workshop focused student Magnus finding this very niche placement and experience.



Perry and Magnus at Ormsby Guitars, O'Connor

Perry really is a producer of some amazing products that are shipped worldwide.



YOUR
CULTURE
IS YOUR
BRAND

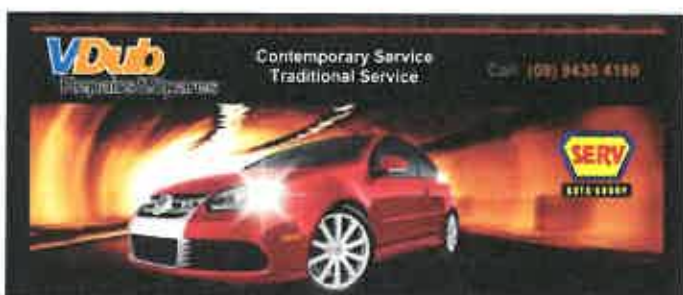
Thanks to Our 2016 Employer Community



KOSP Construction Resources offers an affordable solution to building your home quickly. So whether this is your first home or your next home, we're committed to making this home, the one that's right for you.



Neville at KOSP Construction, Canning Vale



FERGUSON

CORPORATION PTY LTD



Your child's home away from home



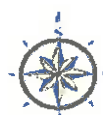
Know an employer who may be interested in joining our ever increasing club. If so, please get in touch with Steph Daniell on 9335 6323

Rebekah and Stacey at Cockburn Dome Cafe



RAD BRASHAW GUITARS

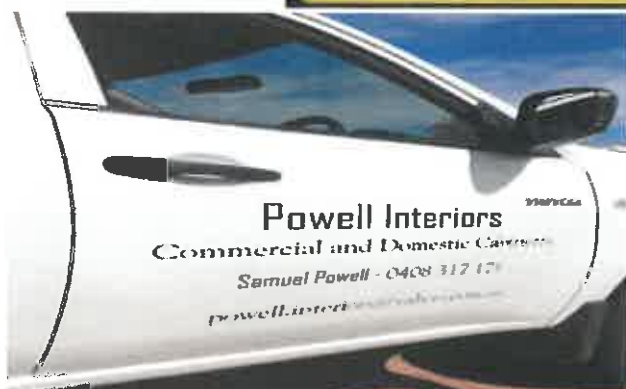
Individually hand-made stringed instruments from Western Australia



**Swarbrick & Swarbrick
Yachts**



**Medina
PRIMARY SCHOOL**



Thanks also to Tony at Anthony Docherty Furniture

Malaysia Fundraiser



@



Klang Special School



Bunnings

Port's Malaysia students turned up for a very early start at Bibra Lake Bunnings, Spearwood for an all day sausage sizzle fundraiser. The students pretty much ran the sausage sizzle all day on their own, which was fabulous to see with Mike, Joy & Phil minimally supervising throughout the day.



Over 600 snags were sold and nearly \$900 was raised for Klang School. Well done to all, proud to be a Port staff member and watch them take part in such a great community event.



Total Raised = \$895-00 which means 2,700 Malaysian Ringgits

