



Annual Report 2022

We respectfully acknowledge that Port School stands on the traditional lands of the Whadjuk people of the Noongar Nation.
We pay our respects to their Elders, past, present and emerging.

About Port School

Port School is an independent secondary school that aims to engage at-risk students in Years 8 to 12 who, for a variety of reasons and situational circumstances, have not been able to achieve in mainstream school settings.

Our Vision is to provide a safe, nurturing and supportive environment in which students are empowered to lead purposeful and fulfilling lives.

The School offers small class sizes, personalised and flexible learning groups, community projects, individualised pastoral care and student support through a variety of networks and external service providers.



Port School operates the following programs:

- Port Middle School
- Port Senior School
- Port Mobile Classroom
- Port Young Parent Centre
- Port Early Learning Centre
- Port Registered Training Organisation (RTO 52718)
- Port Outreach Program
- Port Student Support Services

Detailed program information is available at <http://www.portschool.wa.edu.au>

About Port School

■ Our Purpose

Port School creates and uncovers pathways to a meaningful life by providing experiences that enable student potential. The School supports attainment of its vision through an environment that:

- Is safe, nurturing and inclusive.
- Fosters confidence, personal best and respect for self and others.
- Inspires students to live purposeful lives.

■ Our Values



Diversity

We welcome, nurture and promote each other's differences.



Growth

We keep the educational development and wellbeing of people at the centre of everything we do.



Empowerment

We enable each other to experience thoughts and feelings as valid and important.



Community

We provide a safe and secure environment that promotes contribution, ownership and mutual respect.



Student Award Ceremony 2022

From the Chair of Port School's Governing Board

Anne Gee

The Board acknowledges that Port School resides on unceded Aboriginal land and that as a school, we recognise the strength, resilience and capacity of the Noongar people of this land.

2022 proved once again to be both an exciting and challenging year. I wish to extend my sincere thanks to Deputy Chair Craig Menner, for stepping into the role of Chair in my absence through the months of COVID, and for providing support to our Principal Barry Finch during the third wave of the pandemic. It was indeed a very challenging time for all.

Principal Barry Finch's nomination and subsequent award of the Medal of the Order of Australia (General Division) in the 2022 Queen's Birthday Honour Awards was most certainly cause for celebration and is indicative of the hard work and dedication he has poured into his career and Port School. Barry's award was specifically for his services to at-risk youth and to education.

Port continued to attract attention due to the success and high calibre of our programs and the suite of educational delivery options:

- Principal Barry Finch was invited to act as consultant to a proposed On-Country Diversionary Program in the Kimberley.
- Port School was invited to attend a Canberra forum with the then new Federal Minister for Education, Jason Clare.
- Raf Fecondi successfully secured research funding from Curtin University's Commonwealth funded Safer Communities Project.

The School also welcomed numerous visitors from the education sector and beyond:

- Tracey Taylor, Independent Schools Australia Director of Education Policy, following AISWA's nomination of Port School for this project as a 'Champion in WA' for the research being undertaken into schools working with at-risk youth.
- Chris Massey, Executive Director, Association of Independent Schools WA with outgoing Director and champion of the school, Valerie Gould.
- Wayne Bergmann, Executive Director of the Kimberley Land Council, regarding a diversionary program in the Kimberley.
- Fitzroy Valley DHS staff, to observe the school's programs and to learn about Port's strategies for working with at-risk and disengaged youth.



In 2022, for the first time in Port's history, staff were sufficiently confident that education programs had evolved to the point which enabled them to enrol students in NAPLAN and OLNA testing. The results were very pleasing. This was a major milestone for Port School.

The Middle School complex was completed, ready for the 2023 school year. Staff and students have since moved in to enjoy the new purpose-built teaching and learning space for this quintessential element of the Port School educational re-engagement objective.

My thanks go to our Treasurer and to our Secretary for their unquestionably thorough and critical eyes as they, along with the school leadership, navigated our most substantial building program to date.

The construction of the Middle School complex, in what were the most unpredictable times financially, imposed unknowns that had the potential to increase supply costs three-fold, delay progress and throw the whole endeavour into turmoil. We acknowledge and thank Deputy Principal Mike Gilbert for his excellent management, liaison and timely delivery of progress reports from our design and building partners.

From the Chair of Port School's Governing Board

Anne Gee



Demolition at 58 Wheeler Road



Port's New Middle School Complex

I extend my heartfelt thanks to the Board Executive for the diligence and care taken of their portfolios, and to our volunteer board members for their time, knowledge, expertise and endless generosity of spirit throughout the year. We acknowledge and extend our gratitude for the work of Barry and the school leadership team for ensuring the Board remains well-versed and informed.

The Board is well aware that the successes and recognition gained by the School have not come about by accident. Principal Barry Finch's careful recruitment and development of staff has played a pivotal role in ensuring Port's continued success. The Board is mindful of the fact that having the right person steering the ship is an essential element in maintaining the school's development and pursuit of excellence.

2023 will no doubt be yet another exciting year in the life of Port School. As the rich complexity of the school's offerings find new homes, and staff embrace and embed new delivery methodology, the time is ready to take a comprehensive look at the space and grounds we inhabit to develop a Campus Masterplan going forward. We look forward to meeting these challenges and celebrating the successes as we continue to reflect, evolve and develop.

I am once again grateful for the opportunity to chair Port School's governing board and for the support of our members and executive position holders.

I look forward with excitement to what our next chapter holds.

Anne Gee
Chair
Port School Board

2022 Port School Governing Board

The Board is responsible for the governance of the business in terms of direction and control, including structure, culture, goal setting and decision-making. The Board's core business focuses on sound and ethical business practices; quality outcomes; compliance and risk management.

Chair
Ms. Anne Gee

Deputy Chair
Mr. Craig Menner

Secretary
Mr. Richard Curry

Treasurer
Mr. Eric Sankey

Principal (ex-officio)
Mr. Barry Finch

Members
Ms. Serena Williams
Mr. Ron Gorman

From the Principal

Barry Finch OAM

2022 was an exciting year at Port School. It was a time for consolidation and for achievement. The threat of COVID-19 remained with us throughout the year, and although it continued to have an impact on students and staff in terms of attendance and the quality of educational programs that could be delivered, it did not stop the school community from striding forward, achieving goals and setting new standards.

One of our biggest challenges in 2022 was, without a doubt, the construction of our planned Middle School complex. Port's application for a Commonwealth Capital Works Grant, submitted in 2021, had been successful, albeit for less than originally planned or hoped. The Grant, valued at \$750,000, contributed about a third towards the development costs, leaving a hefty balance for the school to finance. The School Board, in consultation with senior management, considered ongoing challenges in the construction industry and the operational and financial impacts of the project. They decided, in early 2022, to proceed with the planned development. The existing home units on the adjacent land at 58 Wheeler Road were demolished in May 2022, and construction commenced soon afterwards. Thanks to the excellent and professional partnerships with our architects and builders, the complex was completed on budget and on time, ready for the start of the 2023 school year. This new state-of-the-art development, housing three classrooms with break-away areas and outdoor learning spaces will enable Port to continue to expand this important program.

Port's Re-Engagement Strategies – Raising the Bar and Port School's Profile

Port School's reputation for working with young people who are educationally and socially at risk continues to gain momentum, as other schools and organisations seek an insight into the strategies Port uses to re-engage at-risk youth. During 2022, recognition of Port's work and achievements included:

- **In Term 1**, Port was contacted by Wayne Bergmann, Executive Director of the Kimberley Land Council, who was working on a project to set up a detention diversionary live-in program for predominantly indigenous Kimberley youth. Principal Barry Finch was invited to join the committee as the educational consultant for at-risk youth. This invitation reflects the good work undertaken by Port over the years and the reputation it has achieved.
- **In Term 2**, Port hosted a visit by the Deputy Principal and accompanying staff from Fitzroy Valley District High School in the West Kimberley, who had reached out to Port, seeking an insight into the school's re-engagement strategies for disengaged youth.
- **In Term 3**, Port proudly welcomed Tracey Taylor, Director of Education Policy at Independent Schools Australia (ISA), who was visiting one independent school in each state that worked with at-risk youth. The resulting report highlighted the importance of Special Assistance Schools and presented an opportunity to share best practice with similar schools in other states.
- **In Term 4**, Port welcomed Danielle Twomey from Kairos Community College, a Special Assistance School located in Queensland, that had reached out to Port seeking to share practices and strategies for re-engaging at-risk youth.
- Following on from senior staff member Raf Fecondi's presentation of a keynote speech at Curtin University's 'Growing and Developing Healthy Relationships' Symposium in 2021, the School was invited to collaborate with Curtin on a Commonwealth-funded project (Safer Communities), looking at youth in the justice system, and potential strategies to prevent those at-risk youth from offending and re-offending. A Grant of \$80,000 was made available to the School in late 2022 to assist in the development of models and programs and to collect and quantify data. Community consultation days were held in November which stimulated professional conversations with agencies and services including the Department of Health (Child & Adolescent Mental Health Service, Multisystemic Therapy); the Department of Education (Participation, School of Special Education Needs: Behaviour and Engagement); the Department of Communities (Child Protection and Family Support); the Justice Department (Juvenile Justice); Headspace; WA Police; YouthReach South; Anglicare; Murdoch University.

From the Principal Barry Finch OAM

■ **In Term 4**, Port School was selected as only one of two independent schools in Western Australia to send a delegate to Parliament House in Canberra to meet the Federal Minister for Education, the Hon. Jason Clare. The purpose of the forum was to discuss a range of issues facing the education system and to give the Minister an understanding of the breadth and scope of the Independent Schools sector. Port School was represented by Matt Hopkins who spoke specifically about how Port School addresses mental health and disadvantage within our community and showcased the important work we do.



Independent Schools Forum , Canberra

As you will read in this report, 2022 was indeed a busy and successful year for Port School. My sincere thanks go to the Port School Board for their generosity and for their invaluable guidance and support, without which we would not have been able to continue to grow and serve the needs of our community. I also take this opportunity to pay tribute to all the hardworking and highly passionate individuals with whom I have had the pleasure to work during my career in education, and specifically over the last 20+ years at Port School. I thank you all for your support, hard work and commitment to the young people in our wider community.

On a final note, I am proud and humbled to have been named in the Queen's Birthday Honours Awards of 2022 and to have received the Medal of the Order of Australia for service to education and at-risk youth.

I once again think back to the African proverb, ***'It takes a village to raise a child'*** and reflect on how apt this is for our school community.

Barry Finch OAM
Principal
Port School



The 2022 School Year

Port's Middle School program continues to gain momentum. It is the starting point for all Year 8 and 9 students commencing their journey at Port, and operates slightly differently to the conventional secondary school system: students complete all their classes with the same teachers and education assistants. There is a critical focus on literacy and numeracy, the main goal being to bring students up to an educational standard that will help them flourish once they enter Senior School. This is achieved by teaching through High-Impact Instruction.

Due to the nature of Port's student cohort, the School has historically assisted students and families to withdraw from the National Assessment Program – Literacy and Numeracy (NAPLAN). As Middle School students continued to produce (in the Port School context) outstanding academic achievement and attendance, it was decided in 2022 to participate in NAPLAN testing. Seven Year 9 students took part in all four areas of Reading, Writing, Grammar and Punctuation, and Numeracy.

Pleasingly, one student achieved a score above the national average in both Reading and Numeracy. This was an important milestone for the School, and we look forward to continued student engagement with NAPLAN in the future.



Some Port students present with foundational literacy and numeracy skills that are significantly below age-appropriate levels. This may be due to developmental delay, years of missed schooling or specific learning difficulties such as Dyslexia. This has a detrimental impact on their development of literacy skills, specifically reading proficiency, which is recognised as essential in a student's ability to reach their potential.

In 2022, Port implemented a high impact program specifically for these students, complementing the High-Impact Instruction model in the classroom. The Corrective Reading Program is a structured, synthetic phonics program, proven to be effective in building critical reading skills, fluency and comprehension. Through systematic instruction, engaging activities and personalised support, students develop the necessary foundations to become confident, independent readers. Following a placement assessment to determine each student's optimum starting point, they received targeted delivery and assessment on a one-to-one basis throughout the program. Skills were taught to 'mastery' before progressing.

In 2022, twelve students ranging from Year 8 to 12 participated in the program. With the exception of one student, they all progressed successfully through each Mastery Test and a positive outcome in formal testing outcomes, such as ACER and OLNA scores, was recorded. Middle School staff reported marked improvements in student reading proficiency in the classroom with increased vocabulary, improved comprehension, greater self-confidence and participation in class. With less frustration, there was a positive impact on classroom behaviour.

'It helped me a lot. I used to pretend to read and now I really read. It was awesome'

- Year 9 student

'It helps me so much with spelling as well because I now know all those little letter patterns'

- Year 9 student

'It gives me the skills and confidence to think about doing an apprenticeship after school'

- Year 12 student

The High-Impact Instruction model was introduced to the Senior School in 2021. Throughout 2022 our educators continued to invest considerable time and commitment to upskilling and staying abreast of best-industry practice in order to improve outcomes for our students. Port's first engagement with the Online Numeracy and Literacy Assessment (OLNA) was another milestone in 2022. Port students in Years 10 and above took part in the OLNA, achieving pleasing results, particularly as for some students this was their first exposure to this online test.

For the second consecutive year, Port School was invited to take part in the Creative Schools Program (<https://www.creativeschools.com.au/about>). This creative learning program, developed by FORM and supported by AISWA, uses creative teaching and learning strategies to engage students in learning and to impart the skills of being imaginative, inquisitive, collaborative, persistent and self-disciplined.



Creative Schools 'The Biz'

Staff from Port's Senior School Mathematics Department, in collaboration with a Creative from Creative Schools, worked on a project called 'The Biz'. It was designed to explore the real world of business and financial literacy with students and focused on key curriculum areas of Mathematics, Technology and Literacy. 'The Biz' aimed to equip eleven students with real-world skills in organising and managing finances and budgets, as well as imparting skills of how to design, fund and produce a product or service. This was a practical way for students to take maths to the real world, by developing their own business model and producing unique products to sell, with the goal of making a profit. The outcomes were inspirational and profit-making, as seen by the successful sales achieved at the school's annual fundraising Art Exhibition.

The Art Exhibition was held in late October and included for the first time a 'Sculpture Walk'. The collaborative 'Sculptures at Port', a result of Semester 2's main art project, was a big vision that became reality thanks to the superb Arts Team and other key staff. Students worked individually or in teams to produce unique public artworks in a variety of mediums and styles of their choice. These pieces formed a comprehensive sculpture park walk at the Art Exhibition, with visitors voting for their favourite work in the Public Choice Award. Congratulations go to all students and staff who were involved in this challenging project. Their persistence and problem-solving skills were outstanding, as were their original and creative ideas and media.

The 2022 School Year



Port's Annual Art Exhibition

This amazing exhibition was, as always, a fantastic community event with over \$8000 being raised on the night to support Klang Special School in Malaysia. Some of that money also went to assist with the purchase of essentials for the new 'Arts Hub', planned to open in 2023. It is envisaged that the 'Arts Hub' will allow for more flexible creative learning and will hopefully ultimately incorporate an outdoor learning space.

During the year, a group of students from Port's Certificate II Visual Arts class and from Port's Young Parent Centre, was given a unique opportunity to engage in a Creative Schools workshop with renowned street and visual artist Stormie Mills. The drawing sessions explored how reflective journalling can be a positive way to explore and process individual ideas and life's journey. Students had the opportunity to work on their journals over the break with the intent that they will be displayed at a CARE School journal exhibition in Stormie Mill's gallery in early 2023.



Journalling with Stormie Mills

Our 'Seed to Feed' Garden Project took off in a big way in 2022, thanks to generous support from the City of Cockburn and Healthways. The outdoor wicking beds produced bountiful harvests of fresh produce throughout Terms 3 and 4, which were used in the school kitchen, whilst the indoor microgreen production added to the vibrancy of the hospitality area and supplied delicious and nutrient-packed produce to include in the canteen's salads and meals. The 'Seed to Feed' project not only contributed fresh food to growing bodies but also helped both students and staff by delivering mental health and wellbeing benefits.



'Seed to Feed' Project

The Port's Fitness Centre remained popular with many students engaging in after-school sessions with trained Port staff to improve their strength and fitness levels. The Team Sport program continued to provide opportunities for students to improve their fundamental movement skills and promotes our message of how important it is to be a team member and active community member.

Port's Mobile Classroom Program focuses on creating a space where some of our most disenfranchised and disengaged boys can simply belong. The program is targeted at those students for whom a more conventional classroom just does not work. It is about creating a sense of community, and we aim to instil characteristics of honesty, respect and participation in a safe and legal setting. These may seem like fairly humble goals but are essential to any individual's chance of success in the wider community.

The Mobile Classroom's new timetable rolled out in the latter part of 2021, was continued in 2022 and produced a positive year for some students, with improved attendance and participation. The program worked with 18 students during 2022. Most days saw a consistent 4-6 students attending. Before joining the program, some students had truly fallen through the cracks, having not attended any form of educational program for several years. Literacy and numeracy levels can be extremely low and re-engaging these boys is no easy task. We continue to engage some of these students in our Corrective Reading program, which has delivered some promising results and hopefully will impact on the future lives of these young men.



The Mobile Classroom



NAIDOC Day Preparations

Highlights of the school year for the Mobile Classroom students included the NAIDOC celebration, held on campus in late June. The boys were involved in the preparation and enjoyed the event which included a dance performance and art workshop. There was also ample opportunity to engage with community Elders. Some Mobile Classroom boys also attended a Bricklaying Try-a-Trade at Rockingham TAFE in Term 4. Such excursions and events help these young boys realise the different opportunities available to them if they are willing to attend, engage and push themselves further.

Port's Young Parent Centre (YPC) offers flexible educational pathways and opportunities to young parents. It also supports the development of parenting skills including nurturing, health and nutrition, all provided in a supportive, cohesive and holistic learning environment. 2022 saw 18 young mums attending the YPC. This was the youngest student cohort since the inception of the service, with all newly enrolled students under 18 years of age.

Prior to YPC students commencing a Certificate II in General Education for Adults they undergo ACER testing to determine their levels and help identify educational needs. Several students also undertook a Certificate III in General Education for Adults, and four students were enrolled with an external training organisation to study certificate courses in Education Support and Community Services. These qualifications will lead to real pathways for our young mums, once they are able to join the workforce.

The YPC's 'Get Up and Get Active' Campaign, kindly supported by the City of Cockburn, enabled the mums to play volleyball for four weeks (hosted by Volleyball WA) and to enjoy four weeks of Yoga, hosted by a qualified instructor. Their health and fitness was further supported by a twice weekly in-house fitness program, facilitated by qualified Port staff in our state-of-the-art fitness centre.



Young Parents Training

The 2022 School Year

Port's Art Department and the students from the Young Parent Centre were once again honoured to be invited to create a banner for the Department of Communities National Child Protection Week in September. The students designed and created an amazing banner that explored the 2022 theme, 'Every child in every community needs a fair go'. The banner focused on cultural diversity and safety, and YPC student Heidi Simmons presented the following at the event:

'The artwork that you see before you today explores this year's theme with images that have important symbolism to us as young mums. The focal points are the 2 children and the father, embracing his daughter, which shows the love and support that children need to thrive. We wanted to focus on cultural diversity by representing a family that isn't the Caucasian stereotype. Both children are laughing and happy, the young boy has colourful paint on his hands representing playfulness and fun.

The treehouse is an image that is synonymous with children and their backyards, and we also feel that it represents spending important time together. Building a treehouse is an activity that children do with their parents, uncles or carers, and it symbolises building something together. The doll house has a white picket fence and this to us represents a safe house. The dump truck is a metaphor for hard work and how we as parents will always try to guide and support our children with their chosen career paths. The dinosaur symbolises strength and bravery, and the grass that frames the banner represents the parks and ovals our children need to play on. The fresh air they breathe, blue skies and sunshine are also critically important for happy, healthy children.

The style we have used is a simple, modern approach, with some cubistic elements in the background breaking up the vast sky. The simplistic representation of the clouds might even remind you of a wallpaper print in a child's bedroom.

Child Protection Week means so much to us as mums, because we would always want our children protected, healthy, happy and loved.'



These are strong and meaningful words from a group of strong young women, on track to forge a successful path for themselves and their children.

Port's Early Learning Centre (ELC) had a busy year, caring for up to 15 children on some days, with an emphasis on play-based learning. The focus in 2022 was once again on sustainability, and the team was grateful to secure a \$1000 Woolworths Land Care Grant. The aim of the project was to create an edible native garden. The intent was to impart knowledge of food production and sustainability, as well as enhancing the children's sensory abilities and positive social skills by taking part in the development and maintenance of the garden. The children were involved in preparing the soil, planting, watering, harvesting and consuming produce. The gardens flourished and the children continued to do a great job looking after them. The garden also attracted different living creatures including ladybugs, butterflies and some special visitors including blue-banded bees and a blue-tongue lizard.

The 2022 School Year

Port School's Registered Training Organisation (RTO) and Vocational Education and Training program (VET) continued to consolidate past works in 2022, whilst expanding its scope and focus. With the priority on developing job readiness and career exposures, it was a busy year with many career excursions, incursions and activities. The Australian Defence Force were regular visitors on campus, offering mentoring and career advice to our students. Other visitors included Rio Tinto, Curtin Physiotherapists, WA Police, various employment providers, local business owners and Murdoch and Curtin Universities.



Try-a-Trade



Vocational Achievements

As well as providing a high standard of training from Port's RTO, the School continued to engage with external training providers to offer a diverse range of quality training packages to our students. Port's partnership with South Metro TAFE also stepped up a level, with SMTAFE offering bespoke career tasters for Port students, ranging from drone piloting to Beauty Services. As a result, Port has a record number of students enrolled in TAFE studies for 2023.

Port's Outreach Program continued to receive positive feedback, not only from parents and carers who were struggling with the knowledge that their child was going backwards socially and educationally, but also from both government and non-government support agencies. It has rapidly gained the recognition it deserves, and is now the program of choice for challenged youth in the south metro area.

Outreach is a one-on-one offsite program aiming to reduce the stress some students experience when required to work in classrooms in a conventional school environment. It utilises local youth centres, libraries and other community services as part of the Outreach classroom. The level of trauma which some of these young people have experienced has had a profound effect on their ability to engage at any level, with some having not been able to leave their bedroom or the family home for extended periods. The long-term goal of this program is to transition students back into life and to an onsite school environment, by offering them support academically, socially and emotionally to re-engage with their education. 2022 was an extremely busy and challenging year for our team who worked with a total of 29 students.

Although the ongoing presence of COVID-19 in the community continued to have a major impact on both staff and students in the Outreach program, engagement and attendance increased by 20% in 2022. Twelve students completed one or more nationally accredited qualifications and workplace compliance licences. These included Certificate II in General Education for Adults, Certificate I in Automotive, Certificate II in Hospitality, Certificate II in Nail Technology, Working at Heights, White Card and First Aid. Important initiatives already in place for our campus-based programs including our Corrective Reading Program and ACER testing, were also implemented on this program.



Outreach Program

The 2022 School Year

Health and wellbeing are essential for quality of life and are fundamental preconditions for learning and development. Port School's Student Support Services is committed to ensuring that all students receive the best possible support and care, including the most vulnerable and disadvantaged individuals. Port aims to empower students to cultivate a sense of ownership over their social and emotional wellbeing and build resilience to support them in their life journey. Every student has unique needs and challenges, and Port strives to provide the best possible care for them.



'WILDE' – What if Limitations didn't Exist

The dedicated team of staff in Student Support Services aimed to provide a supportive culture within the Port School community, by promoting the school's core values of Diversity, Growth, Empowerment and Community. They continued to deliver a range of programs and forums to support students' needs and challenges.

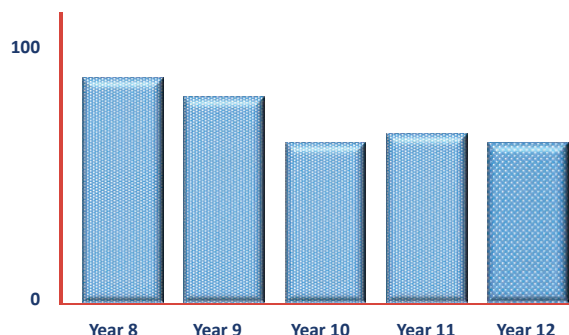
- **'Shed Talk'** – providing a sense of belonging for young boys through open expression of thoughts and feelings and the encouragement of healthy relationships
- **'BUMP'** – Better Understanding my Parenting, specifically for the YPC students
- **'WILDE'** – What if Limitations didn't Exist – an outdoor adventure experience designed for teenage boys aimed at developing confidence and resilience to help them become respectful and healthy young men
- **Headspace LGBTQIA+ Forums**

The Student Services Department clocked up 1980 student access visits in 2022. This data was collected daily, and visits were categorised into several areas of need, including counselling support services, pastoral care, personal/hygiene needs, Centrelink and housing support services, medical needs, and most importantly, offering a calm environment for students needing to chill and reset. A total of 875 students sought wellness and counselling support.



Southwest Camp

Attendance



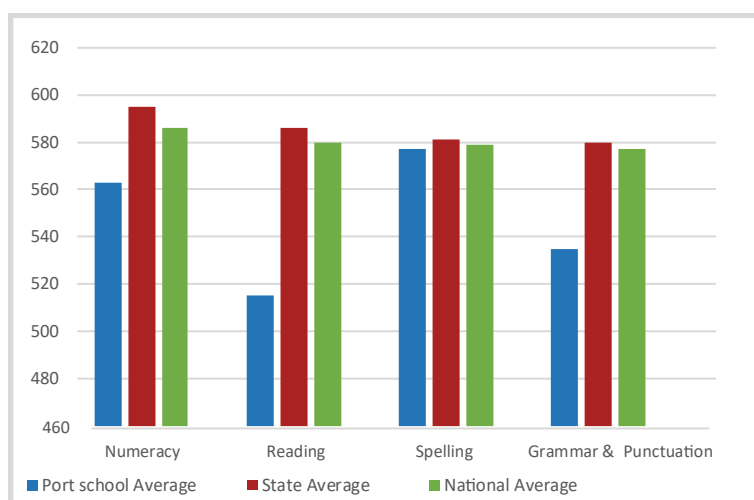
| Year 8 | Year 9 | Year 10 | Year 11 | Year 12 |
|--------|--------|---------|---------|---------|
| 79% | 72% | 56% | 59% | 56% |

The impact of COVID-19 restrictions and the level of anxiety caused within the school and the community-at-large continued to have a profound effect on student mental health and attendance throughout 2022. Students who continue to struggle to engage on campus, may be referred to the Port Mobile Classroom or Outreach Program.

Port School has a non-attendance management system. If a student is recorded as being absent without a justifiable notification, an SMS is sent by 9.30am to the parent/carer by the school administration team. If the student continues to be absent, the student mentor contacts the parent/carer by phone. Regular attendance still poses a great challenge for students, some of whom may not have attended school for an extended period before enrolling at Port. Attendance remains a priority, with a targeted, student-specific approach to parents and carers through the Individual Education Plan (IEP) process.

2022 NAPLAN Results - Year 9

Due to the nature of Port's student cohort, the School has historically assisted students and families to withdraw from NAPLAN. Improved academic achievement and attendance of Middle School students, led however to a decision in 2022 to participate. The results below show Port School students' results in comparison to the Year 9 state and national averages.



Student Achievements

Port School offers Certificates in General Education for Adults plus a range of vocational certificate courses, delivered either via Port's own Registered Training Organisation (RTO), via auspice arrangement with another RTO, or via arrangement with an external training provider. The courses are nationally recognised qualifications, and provide an excellent transition into tertiary study, apprenticeships or traineeships, and the workforce. The following Certificates were awarded to Port School students in 2022.

| | Year 11 | Year 12 |
|--|---------|---------|
| Certificate II in General Education for Adults | 7 | 15 |
| Certificate II in Visual Arts | | 1 |
| Certificate II in Community Services | | 5 |
| Certificate IV in Community Services | | 2 |
| Certificate I Automotive | | 1 |
| Certificate II in Hospitality | | 4 |
| Certificate II in Animal Studies | | 1 |
| Certificate II in Plumbing | | 1 |
| Certificate III in Nail Technology | | 1 |

Student Information

Scholarships & Awards

Port School presents annual scholarships for outstanding performance in a variety of educational areas throughout the School. The following students were recognised for their commitment and achievements in 2022.

| | | |
|--|--|--------------------|
| 🏆 Numeracy Scholarship | Danesh Hachemi-James | Year 10 |
| 🏆 Literacy Scholarship | Noah Branley and Rohan Anderson | Year 12 |
| 🏆 Health & Social Science Scholarship | Gus Sambrailo | Year 12 |
| 🏆 Excellence in Art Scholarship | Diana Lorenzo-Perez | Year 10 |
| 🏆 Physical Education Scholarship | Alison Kubeckis and Blake Joshua | Year 8 and Year 11 |
| 🏆 Academic Excellence Scholarship - YPC | Tuhleesha Walley | Year 12 |
| 🏆 Recognition of Outstanding Academic Achievement | Mitchell Hoskin-Hantler | Year 12 |
| 🏆 First Nations Student Awards | Natalee Fisher Strettles and Tuhleesha Walley | Year 12 |

Thanks to sponsorship from the Cockburn City Council, Port presented its inaugural First Nations Student Awards in 2022. These awards were presented to First Nations students who had displayed a consistent and outstanding commitment to their education and to achieving their goals. These students have been excellent role models throughout their enrolment at Port School and the school community was extremely proud to recognise and celebrate their achievements.

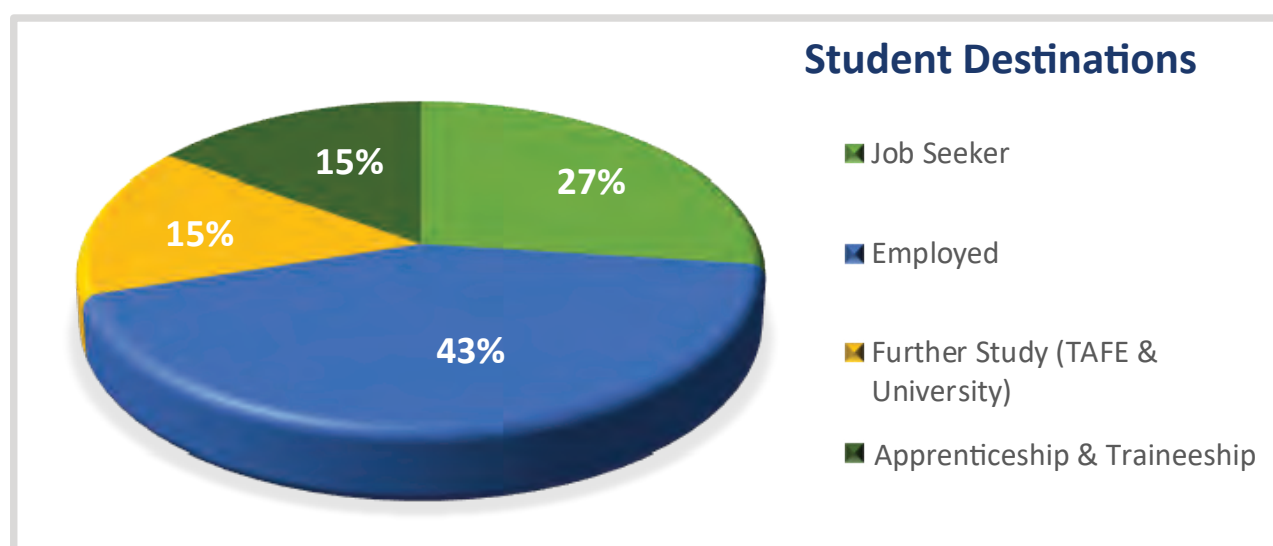


First Nations Student Awards

Student Destinations

Port aims to support students transitioning to the workforce or to further education or training. Tracking student destinations accurately proves challenging as the parameters frequently change.

Year 13 is an option for some students who may not be quite ready to transition out of school and into the workforce. Students in this program are expected to be enrolled in an agreed vocational qualification or school-based traineeship, to have secured employment or to be engaged with a Job Network Provider. There is an expectation that they are active role models contributing to the community, taking on a leadership role whilst maintaining an agreed level of attendance and engagement. An individually designed transition plan is implemented to ensure their readiness to transition into employment or further study.



Workforce Composition

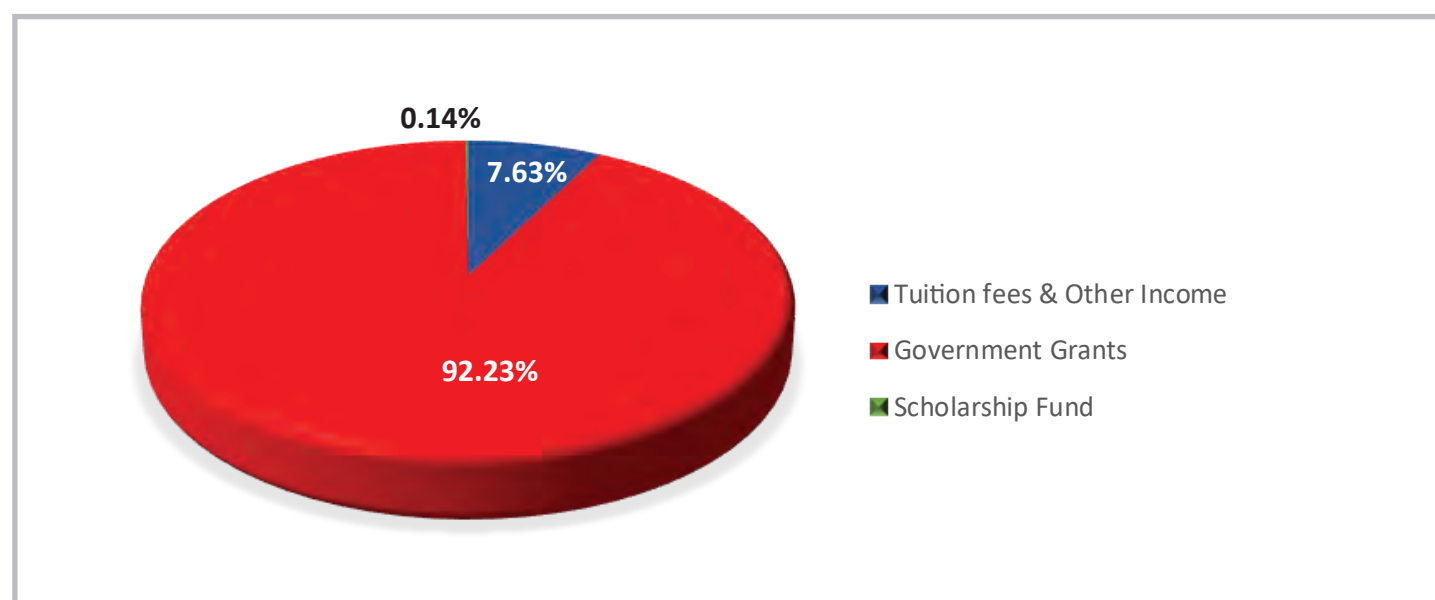
| | | | | | |
|-----------------|----|---------------------------|----|-----------------|----|
| Male staff | 19 | Administration/Operations | 14 | Total Workforce | 56 |
| Female Staff | 37 | Full-time | 32 | | |
| Teaching staff | 12 | Part-time | 21 | | |
| Student Support | 30 | Casual | 3 | | |

2 staff members identify as Aboriginal or Torres Strait Islander.

All teaching staff employed by Port School hold the appropriate qualifications and are registered and approved by the Teacher Registration Board of Western Australia (TRBWA). Trainers delivering vocational Certificate courses hold the relevant qualification, a Certificate IV in Training and Assessment (TAE) and have extensive industry experience.

| | |
|--------------------------|--|
| ■ Mr. Joshua Brun | BSc Sports & Exercise, Grad Dip Ed, Cert IV TAE, Cert IV Fitness |
| ■ Ms. Joy Cromwell | BEd Secondary, BA English, Cert IV TAE |
| ■ Ms. Raffaella Fecondi | BA Theology & Philosophy, MA Oxon, Grad Cert Ed, Cert IV TAE |
| ■ Ms. Dionne Garvey | BEd Secondary, Cert IV TAE |
| ■ Ms. Jane Hawdon | BA Anthropology & Linguistics, Grad Dip Ed, Cert IV TAE |
| ■ Mr. John Hill | BA Philosophy & History, BA Philosophy of Aesthetics (Hons), Grad Dip Ed |
| ■ Mr. Matthew Hopkins | BEd Primary, Cert IV Hospitality, Cert IV TAE |
| ■ Mr. Sam Kerridge | BSc Psychology Grad Dip Ed, Cert IV TAE |
| ■ Ms. Kathleen Murray | BEd Early Childhood Education |
| ■ Mr. Aidan Rowden | BEd Primary, Cert IV Fitness, Cert IV TAE |
| ■ Ms. Lena Streiff Kosok | BA Performing Arts, Grad Dip Ed |
| ■ Ms. Eileen Vlahovich | BA Psychology, Master of Teaching Primary, Cert IV TAE |

School Funding



A copy of Port School's full financial report for 2022 is available at <http://www.acnc.gov.au>



Annual Report 2022